

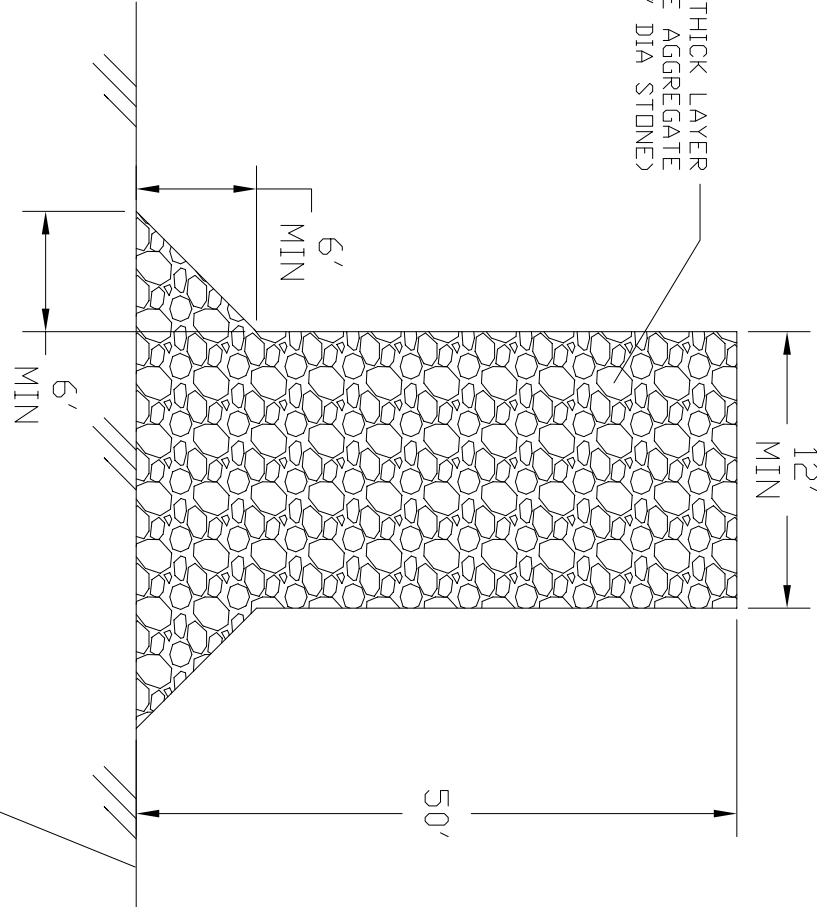
SEEDING SCHEDULE

VEGETATIVE SEEDING  
WITHIN 14 DAYS AFTER COMPLETION OF GRADING ACTIVITIES  
ALL EXPOSED AREAS SHALL  
BE TEMPORARILY SEEDED OR PERMANENTLY SOODED TO  
THE FOLLOWING SPECIFICATIONS:

SEED BED (JANUARY THROUGH DECEMBER)  
LIME 1-1/2 TON PER ACRE  
FERTILIZER 1/2-TON PER ACRE  
TEMPORARY SEED (JANUARY THROUGH DECEMBER)  
TO BE PROVIDED IN ADDITION TO OTHER SEEDS LISTED  
RYE GRASS 50 LBS PER ACRE  
SWITCH GRASS 9 LBS PER ACRE  
PERMANENT VEGETATION (JANUARY THROUGH DECEMBER)  
SOD SHALL BE INSTALLED AT ALL DISTURBED AREAS UPON  
COMPLETION OF WORK.

PROCEDURE  
STRAW MULCH SHALL BE APPLIED AT A RATE WHICH WILL  
INSURE APPROXIMATELY 75% COVERAGE OF THE SEEDED  
AREA. THE STRAW AND SOWN SEED WILL BE LIGHTLY  
DISCED INTO THE BED TO GIVE IT FURTHER RESISTANCE  
TO BLOWING AND WASHING. PERMANENT VEGETATION SHALL  
BE ESTABLISHED AFTER SOD IS PLACED AND ROOTED OR  
AFTER PERMANENT SEED MIXTURE HAS GROWN AND COVERED  
95% OF THE TOTAL PVIOUS AREAS.

NOTES:  
THE NOTES CONSTRUCTION PERMIT REQUIRES EROSION CONTROL DEVICES AND STORM WATER OUTFALLS BE  
INSPECTED WEEKLY AND WITHIN 24 HOURS OF A 1/2 INCH RAIN EVENT. IT WILL BE RESPONSIBILITY OF THE  
CONTRACTOR TO CONDUCT THESE INSPECTIONS AND MAINTAIN RECORDS. WHEN THE AEA HAS STABILIZED,  
EVIDENCE OF EROSION CONTROL DEVICES AND STORM WATER OUTFALLS SHALL BE MAINTAINED. A  
GAUGE IS REQUIRED TO BE ON-SITE. ONCE STABILIZATION HAS BEEN ACCOMPLISHED, INSPECTION RECORDS ARE  
TO BE FORWARDED TO ENVIRONMENTAL AFFAIRS DIVISION THROUGH THE CONTRACTING OFFICER AND ALL  
TEMPORARY EROSION CONTROL MEASURES DEVICES REMOVED. THE CONTRACTOR IS RESPONSIBLE FOR  
MAINTAINING COMPLIANCE WITH ALL PERMITS AND PLANS. ANY CHANGES MUST BE APPROVED BY THE STATE  
PRIOR TO EXECUTION. A COPY OF THE EROSION AND SEDIMENTATION CONTROL PLAN, LETTER OF APPROVAL  
AND WORKS CONSTRUCTION PERMIT MUST BE MAINTAINED BY THE CONTRACTOR AT THE ON-SITE OFFICE.



TEMPORARY CONSTRUCTION ENTRANCE (CE)  
NOT TO SCALE

DATE	REVISIONS

STORM WATER / EROSION CONTROL PLAN

SWANSBORO ANIMAL HOSPITAL  
EMERGENCY & TRAUMA CENTER  
130 PHILLIPS LOOP RD.  
SWANSBORO, NC 28584

DAVID W. TOWLER, P.E.

910.324.492  
132 JONES BLVD  
HUBERT, NC 28589  
EMAIL: TOWLERDAVID@YAHOO.COM

CONCEPT DRAFTING + DESIGN  
CDD

P.O. BOX 617  
RICHLAND, NC 28571-7394  
PHONE: 910.324.2979  
FAX: 910.324.3180  
EMAIL: CONNER.DRAFTING@YAHOO.COM

PRELIMINARY  
FOR  
REVIEW ONLY

SHEET:

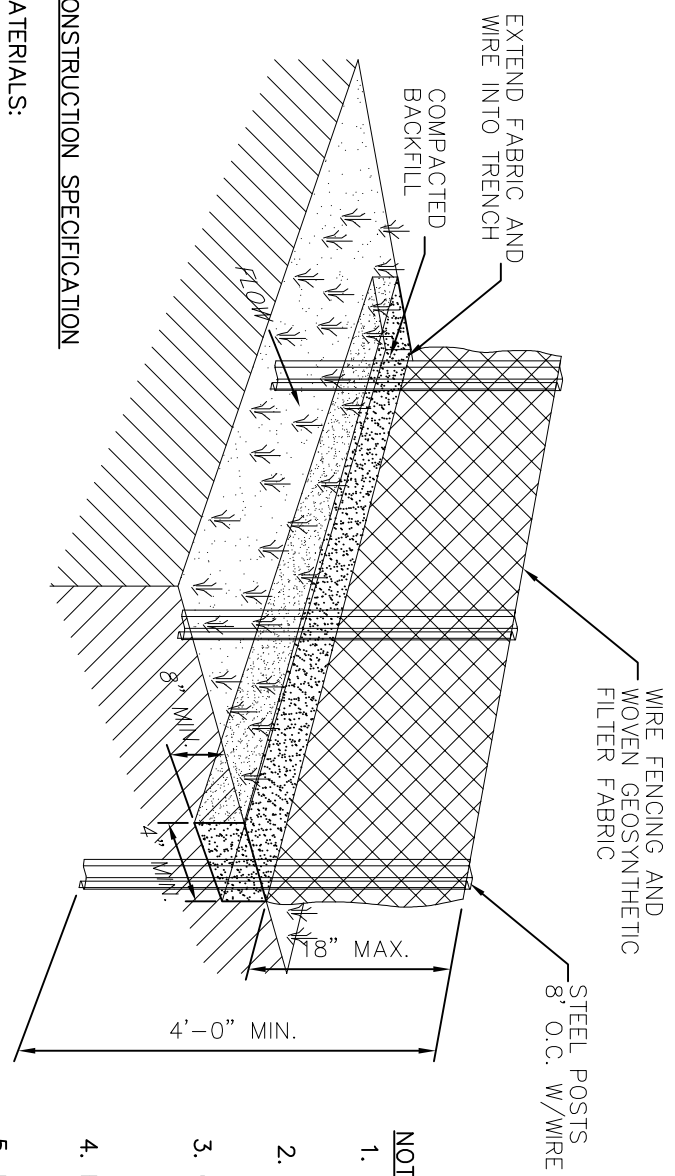
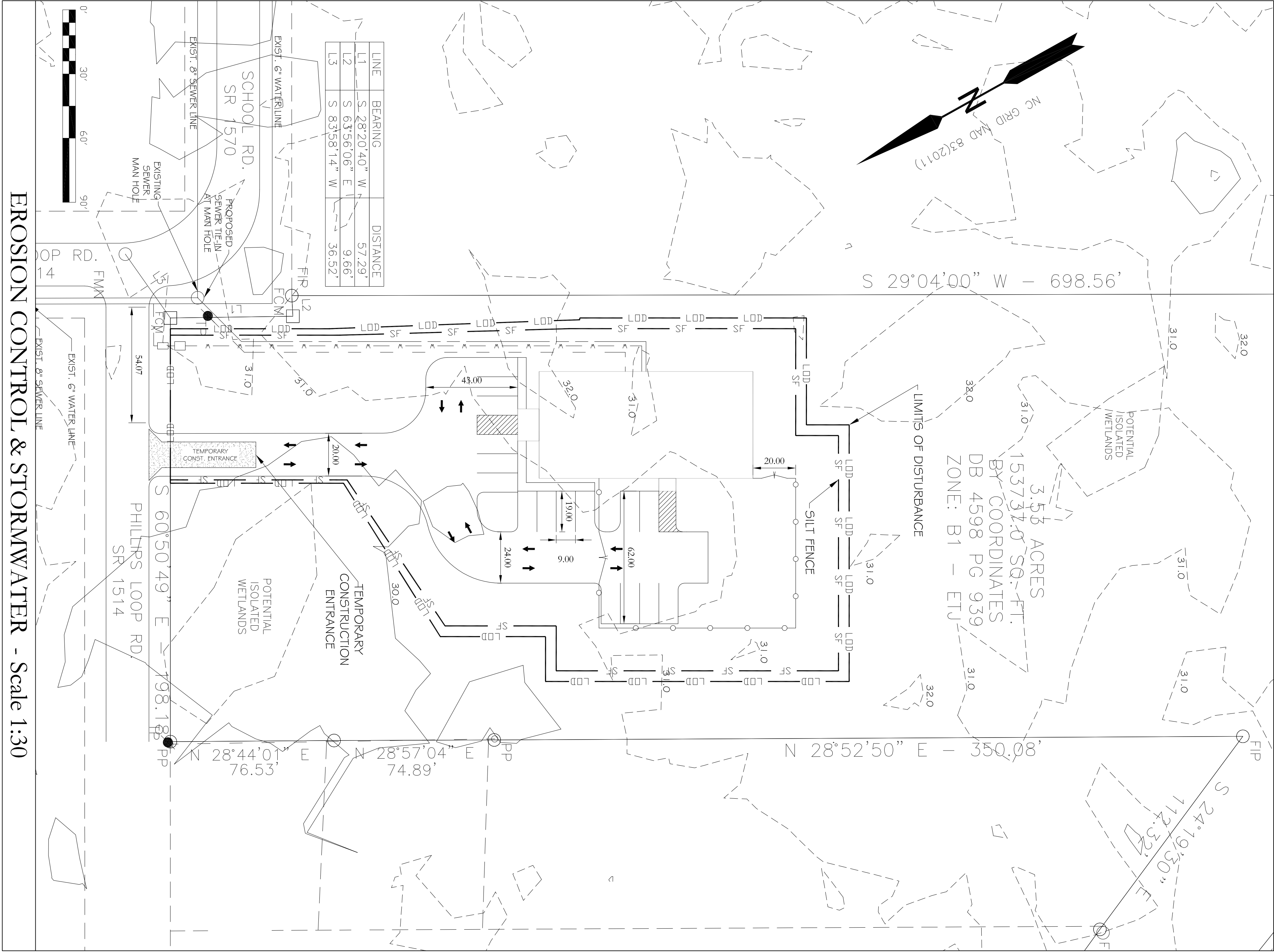
2 OF 2

DRAWN BY:

FILENAME:

17\_028 GUTTER/EROSION PLAN

EROSION CONTROL & STORMWATER - Scale 1:30

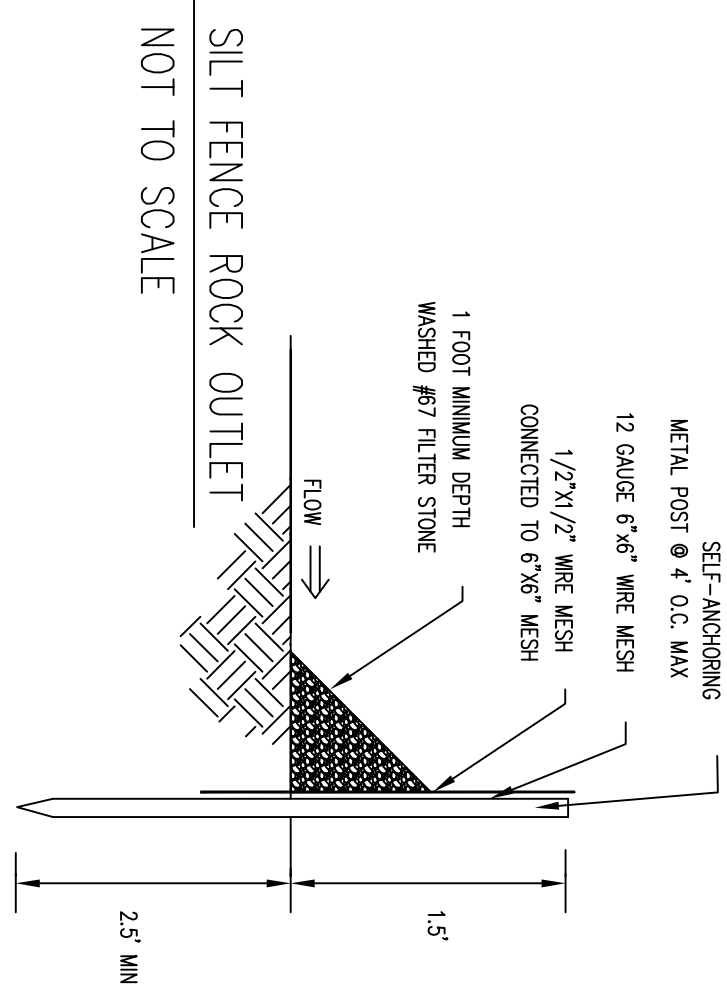


CONSTRUCTION SPECIFICATION

- MATERIALS:
1. USE A SYNTHETIC FILTER FABRIC OF AT LEAST 300 DENIER. THE FABRIC SHOULD BE TESTED, WHICH IS CERTIFIED BY THE MANUFACTURER OR SUPPLIER AS CONFORMING TO THE REQUIREMENTS IN ASTM D 6461, WHICH IS SHOWN IN PART IN SYNTHETIC FILTER FABRIC SHOULD CONTAIN ULTRAVIOLET RAY INHIBITORS AND STABILIZERS TO PROVIDE A MINIMUM OF 6 MONTHS OF EXPECTED LIFE AT A TEMPERATURE RANGE OF 0 TO 120° F.
  2. ENSURE THAT POSTS FOR SEGMENT FENCES ARE SPACED AT A MAXIMUM OF 10 FEET. THE LENGTH OF 5 FEET. MAKE SURE THAT STEEL POSTS HAVE PROTECTIONS TO FACILITATE FASTENING THE FABRIC.
  3. FOR REINFORCEMENT OF STANDARD STRENGTH FILTER FABRIC, USE WIRE FENCE WITH A MINIMUM GAGE AND A MAXIMUM MESH SPACING OF 6 INCHES.

SILT FENCE

NOT TO SCALE



SILT FENCE ROCK OUTLET

NOT TO SCALE